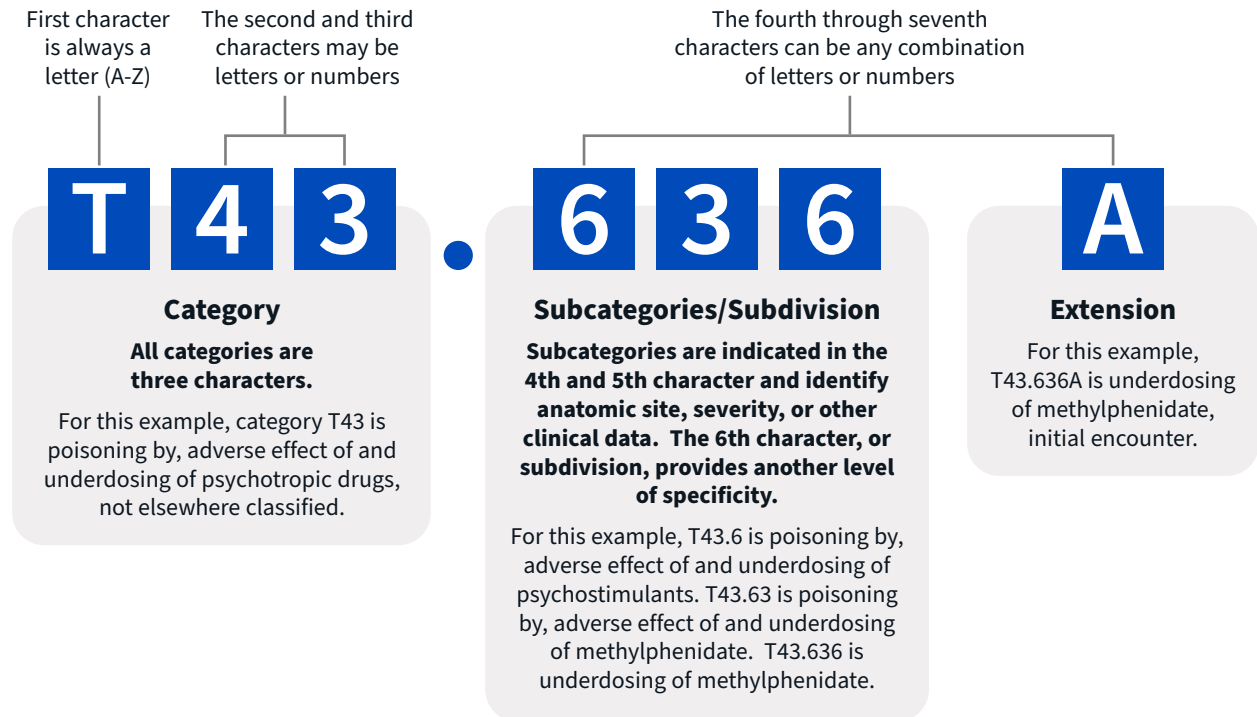


ICD-10-CM Code Structure

In the ICD-10-CM code set, valid codes can be three characters (eg, I10) to seven characters (eg, T43.636A). Below, ICD-10-CM code T43.636A is dissected for further understanding of the new ICD-10-CM code format.

ICD-10-CM code **T43.636** requires a 7th character extension (A, D, or S).



ICD-10-CM uses the letter “X” as a placeholder for future expansion of a code when an alpha/numeric character is not an option without disturbing the coding structure. A single “X” placeholder can be used in the 4th, 5th, or 6th position as shown below, or multiple “X” placeholders can be used in two to three of the 4th, 5th, and 6th positions.

ICD-10-CM code **T56.0X1** requires a 5th character placeholder and a 7th character extension (A, D, or S).

T 5 6 . 0 X 1 A

ICD-10-CM code **M1A.9** requires a 5th and 6th character placeholder and a 7th character extension (0 or 1).

M 1 A . 9 X X 0

ICD-10-CM code **T66** requires a 4th, 5th, and 6th character placeholder and a 7th character extension (A, D, or S).

T 6 6 . X X X A